

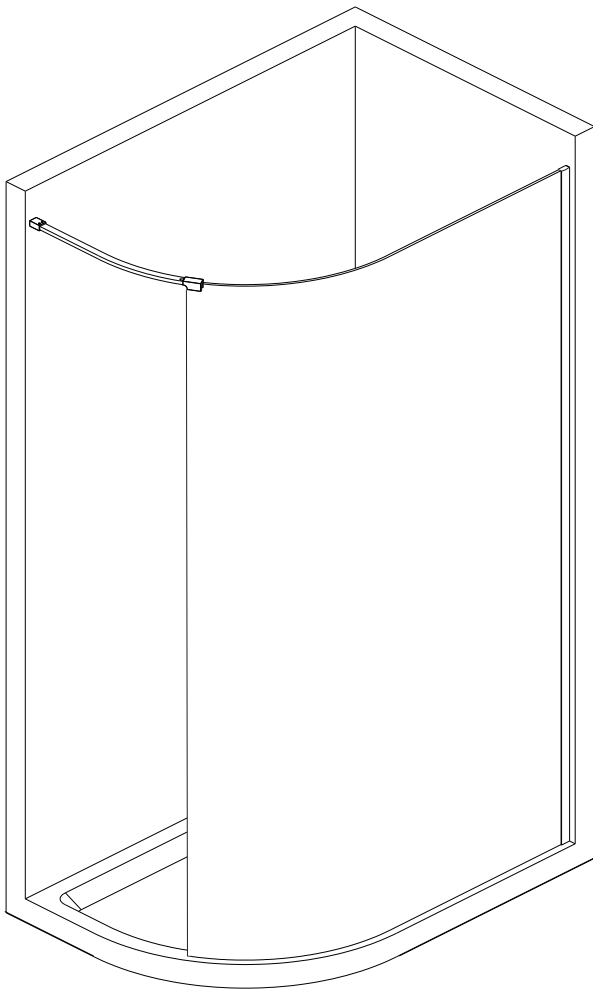


MYLIFE®

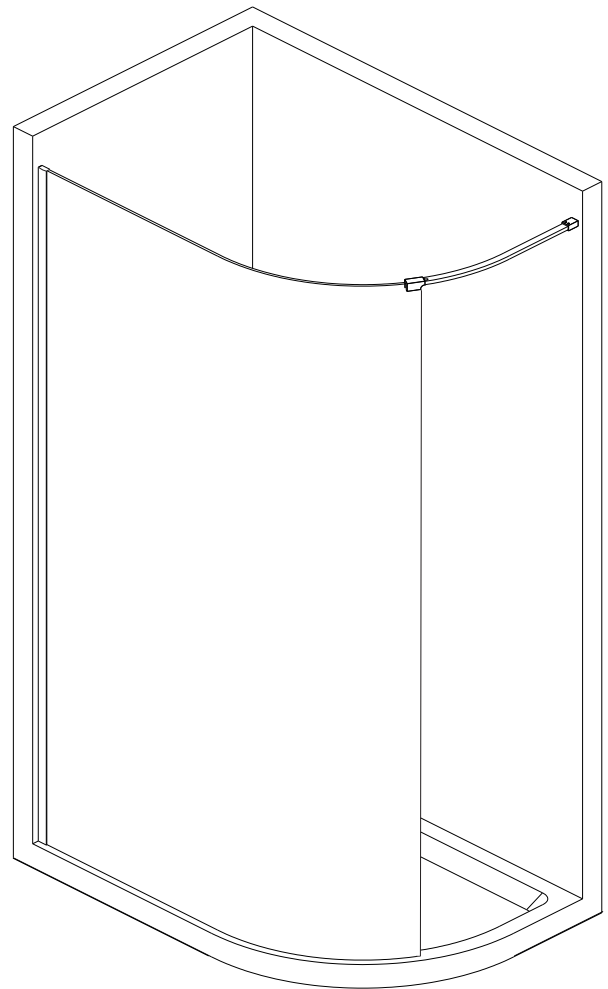
Emmi Curved Wetroom Panels Installation Instructions

**THIS PRODUCT MUST BE INSTALLED
BY A LICENSED PLUMBER / JOINER**

Manufactured to: BS EN14428

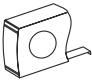


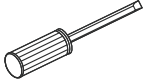

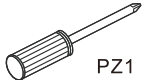

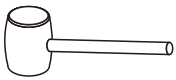





LH



RH

TOOLS REQUIRED

DESCRIPTION	PART IMAGE	DESCRIPTION	PART IMAGE
Tape measure		Drill	
Spirit level		Flat-head Screwdriver	
Pencil		Cross head Screwdriver	 PZ1
Ø6mm Drill bit		Mallet	
Ø3mm Drill bit		Silicone Sealant	

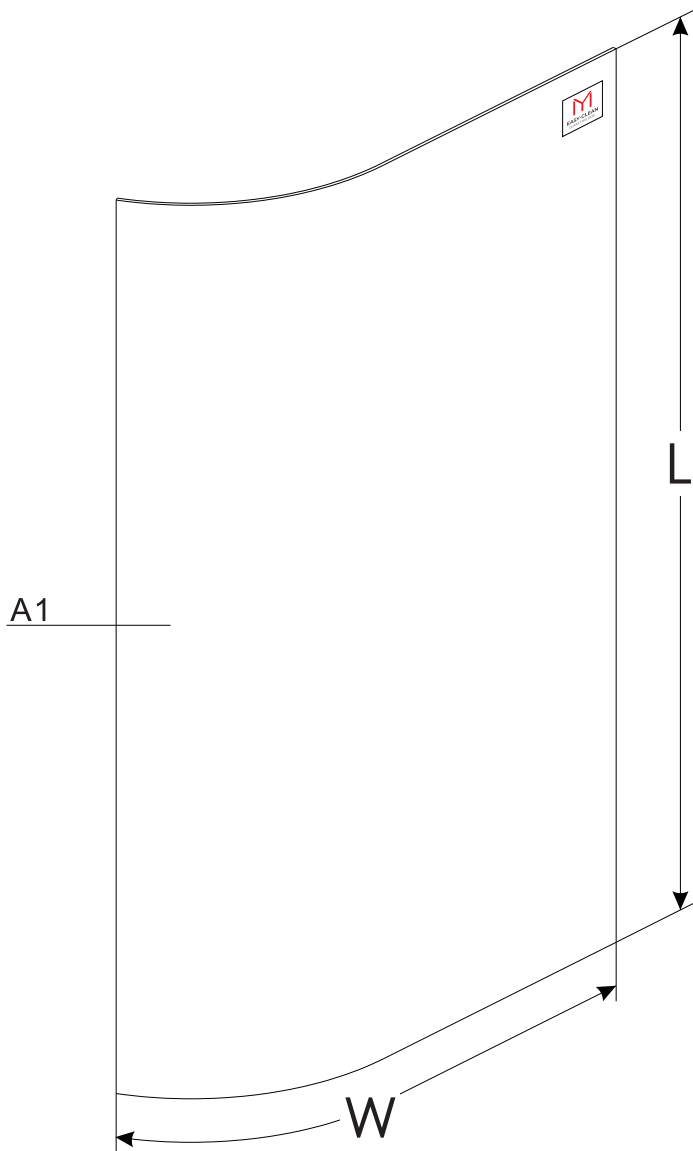
 This product is heavy and may require two people to install.

ASSEMBLY INSTRUCTIONS - DRAWING

NB: ALL MEASUREMENTS + COMPONENT SIZES QUOTED ARE IN MM.

Fixed Glass

A



CODE	W	L
EMCWG	1190	2000



NOTE: MYLIFE EASY-CLEAN MUST ALWAYS BE ON THE INSIDE, PLEASE SEE LABEL ON THE GLASS.

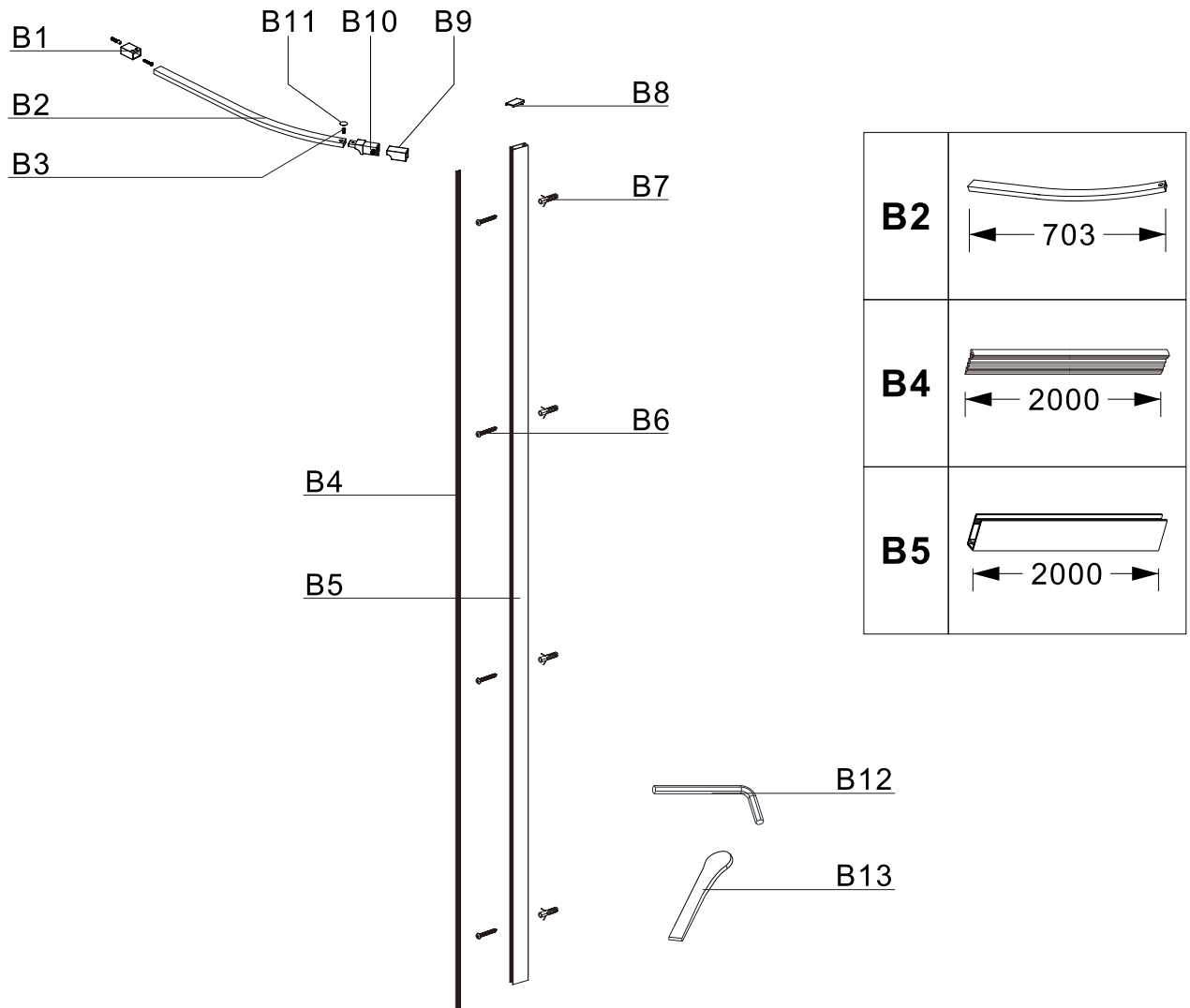
(A1) 1x Fixed Glass

ASSEMBLY INSTRUCTIONS - DRAWING

NB: ALL MEASUREMENTS + COMPONENT SIZES QUOTED ARE IN MM.

Wall Profile & Bracing Bar Kit (EMCWKITCP) (EMCWKITBL) (EMCWKITBB) (EMCWKITGM)

B



(B1) 1x Wall Bracket

(B2) 1x Curved Top Bar

(B3) 1x Screw M4x8

(B4) 1x Seal

(B5) 1x Wall Profile

(B6) 5x Screws ST4x30

(B7) 5x Wall Plug

(B8) 1x Wall Profile Cover Cap

(B9) 1x Glass Clamp Cap

(B10) 1x Glass Clamp

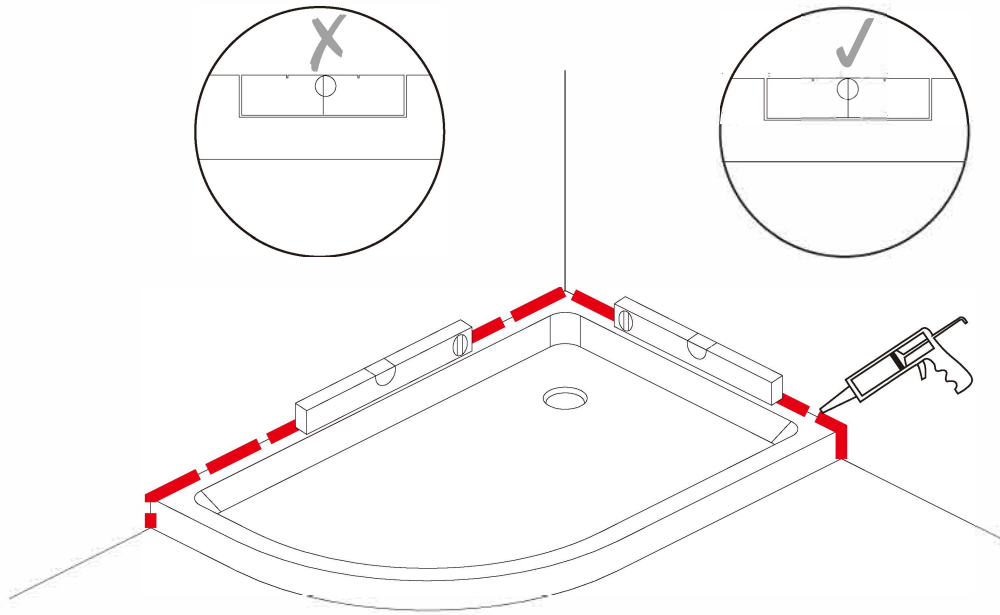
(B11) 1x Screw Cover

(B12) 1x Hex Socket Wrench 2.5mm

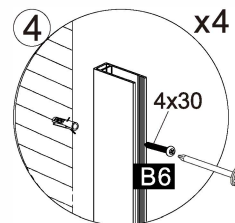
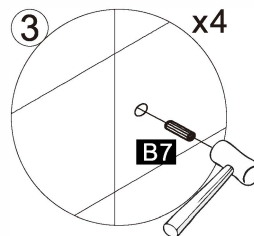
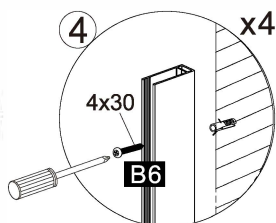
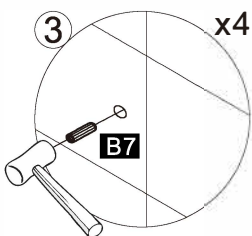
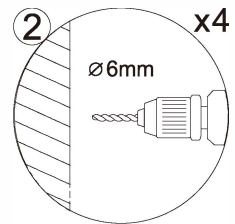
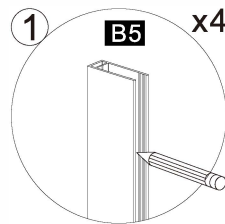
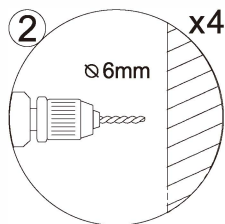
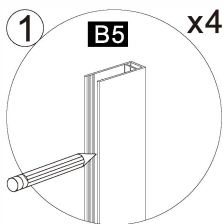
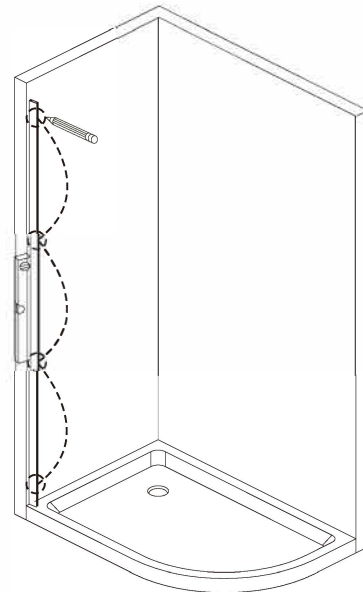
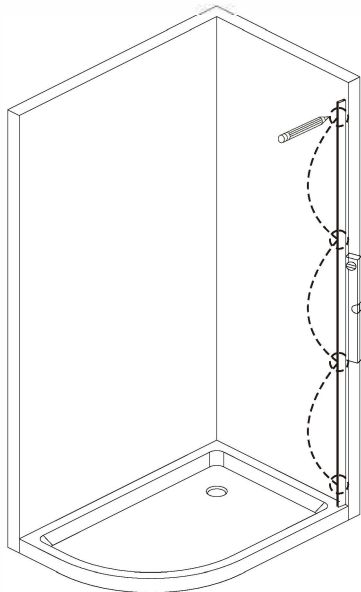
(B13) 1x Gasket Fitting Hand tool

STEP 1 TRAY TO BE LEVEL

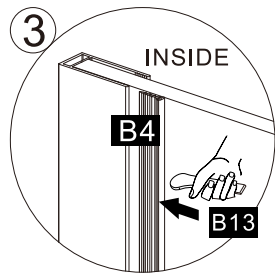
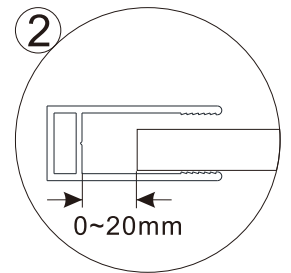
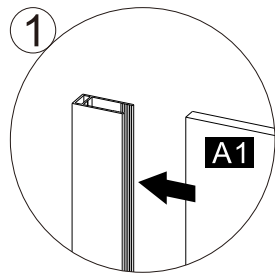
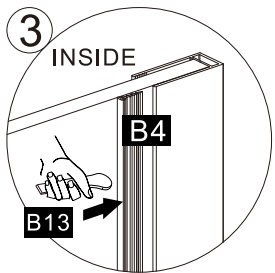
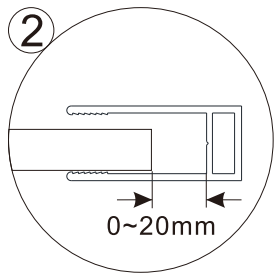
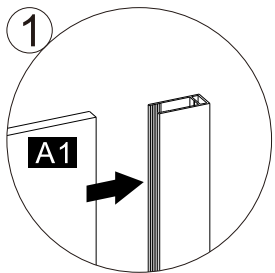
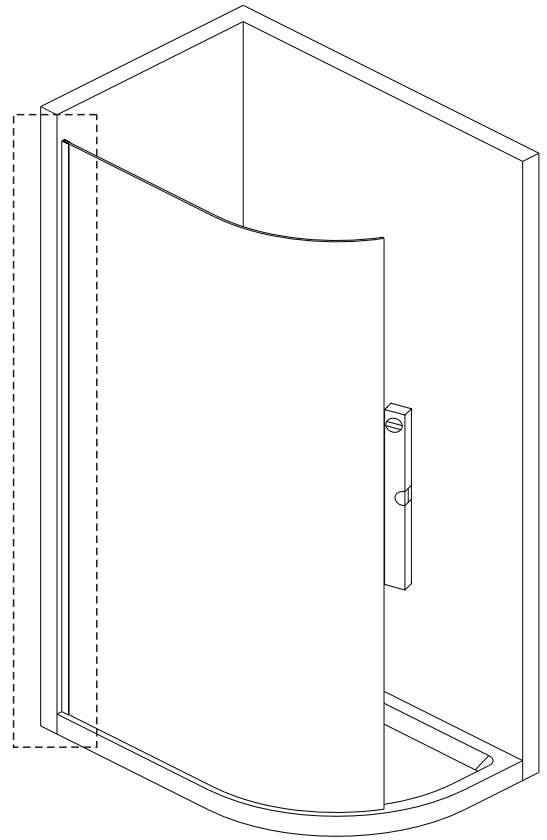
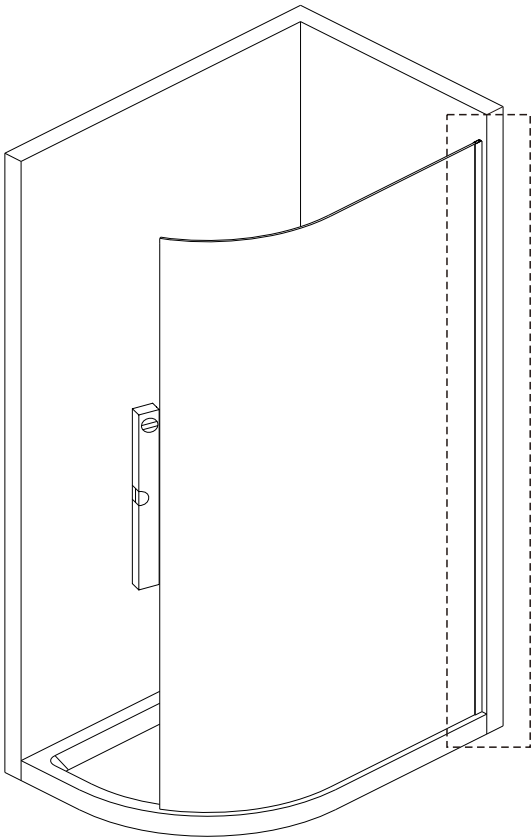
MAKE SURE THE TRAY IS LEVEL, USING A SPIRIT LEVEL, BEFORE INSTALLING THIS WETROOM PANEL, AND THAT SILICONE IS APPLIED ON ALL SIDES WHERE THE TRAY MEETS THE TILES / WETROOM PANEL



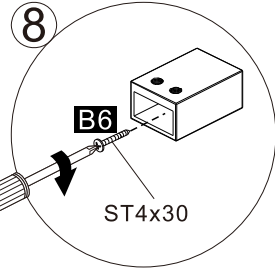
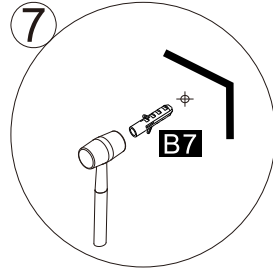
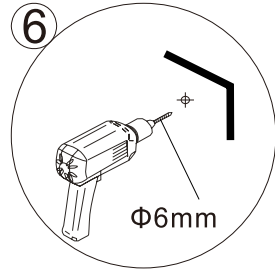
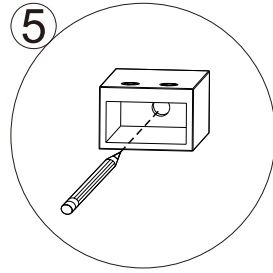
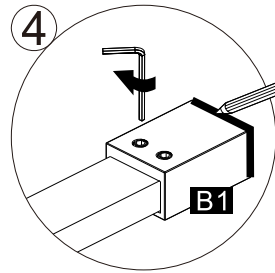
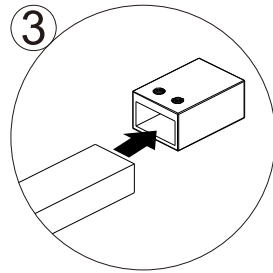
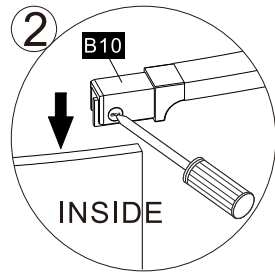
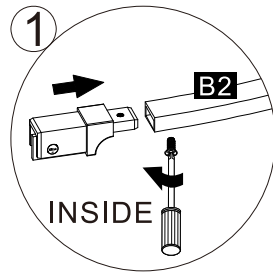
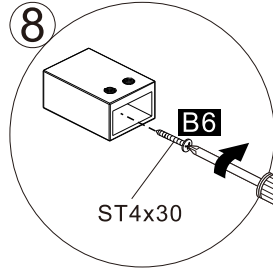
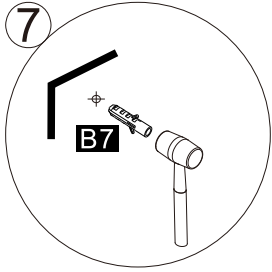
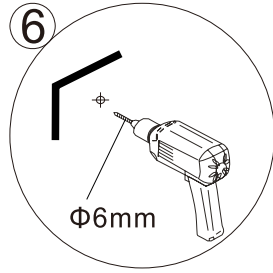
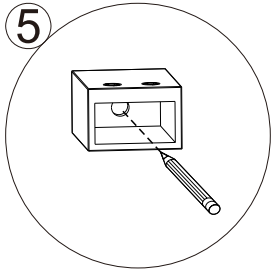
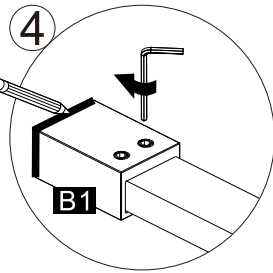
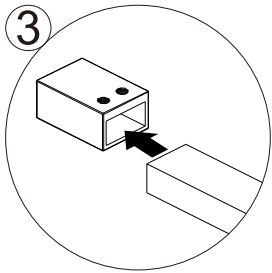
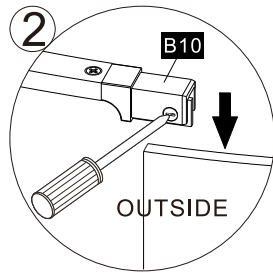
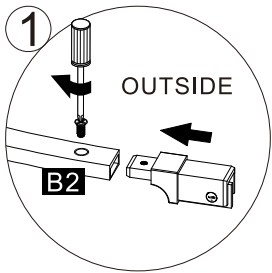
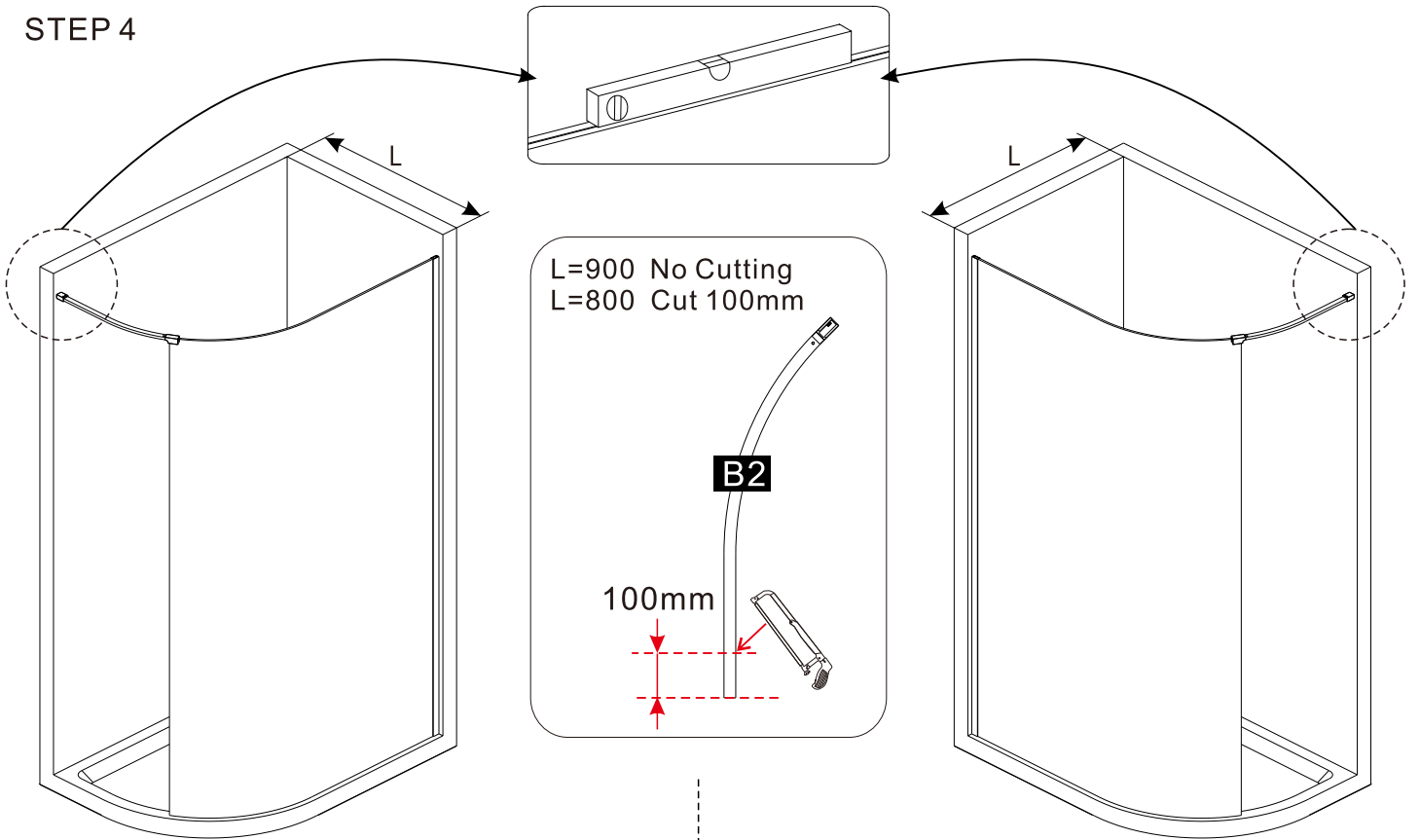
STEP 2



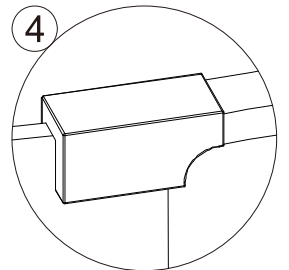
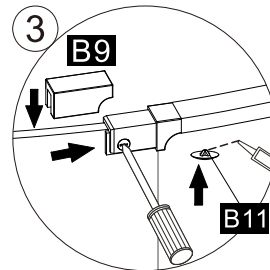
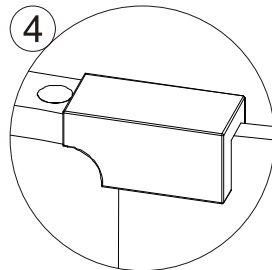
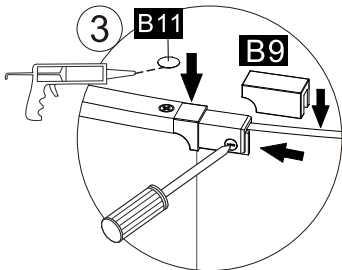
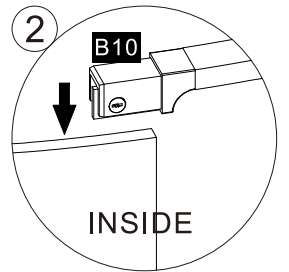
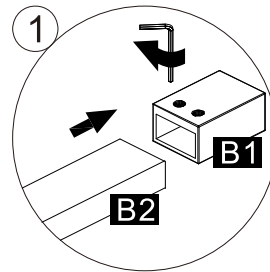
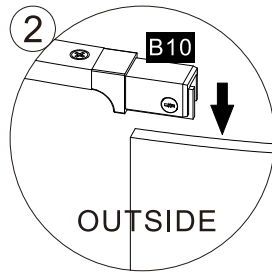
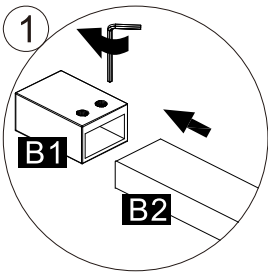
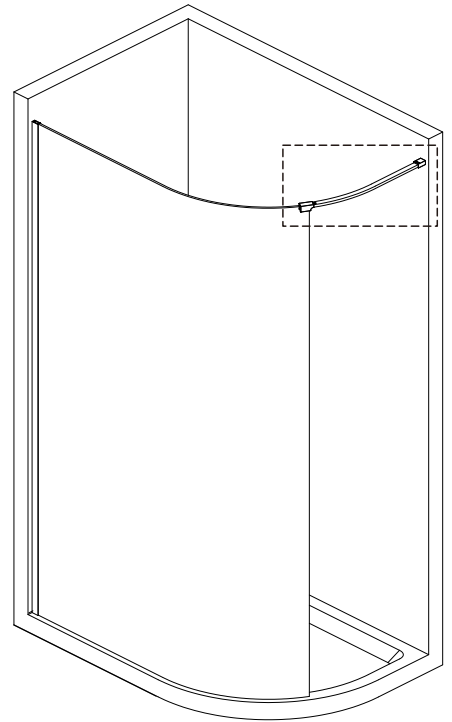
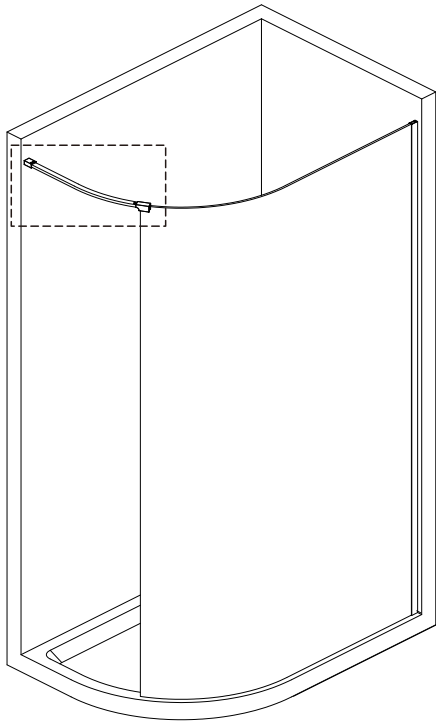
STEP 3



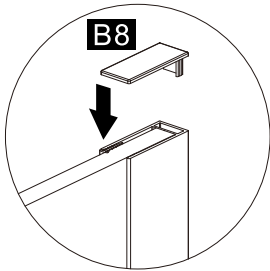
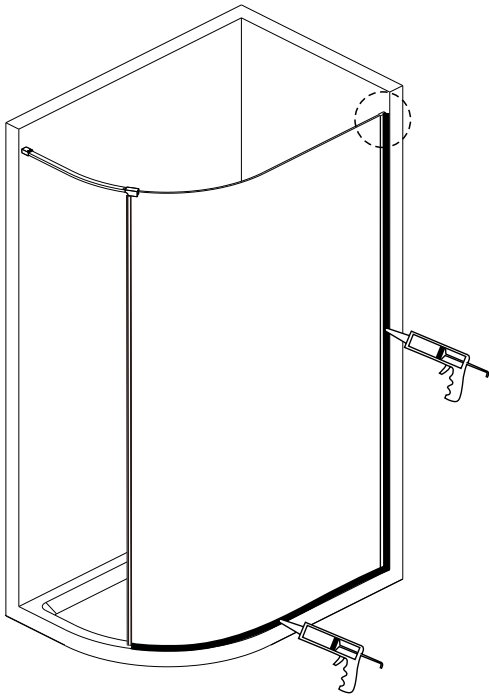
STEP 4



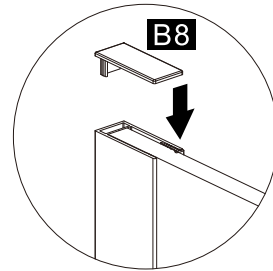
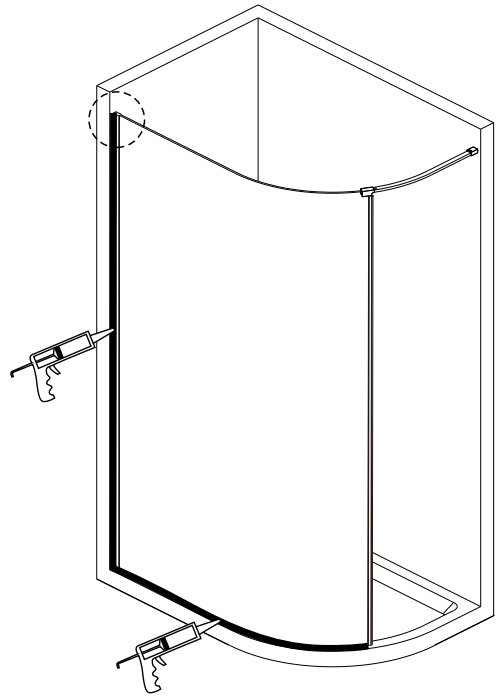
STEP 5



STEP 6



**Allow 24 hours silicone to dry before use.
Silicone on the inside edge only**



**Allow 24 hours silicone to dry before use.
Silicone on the inside edge only**